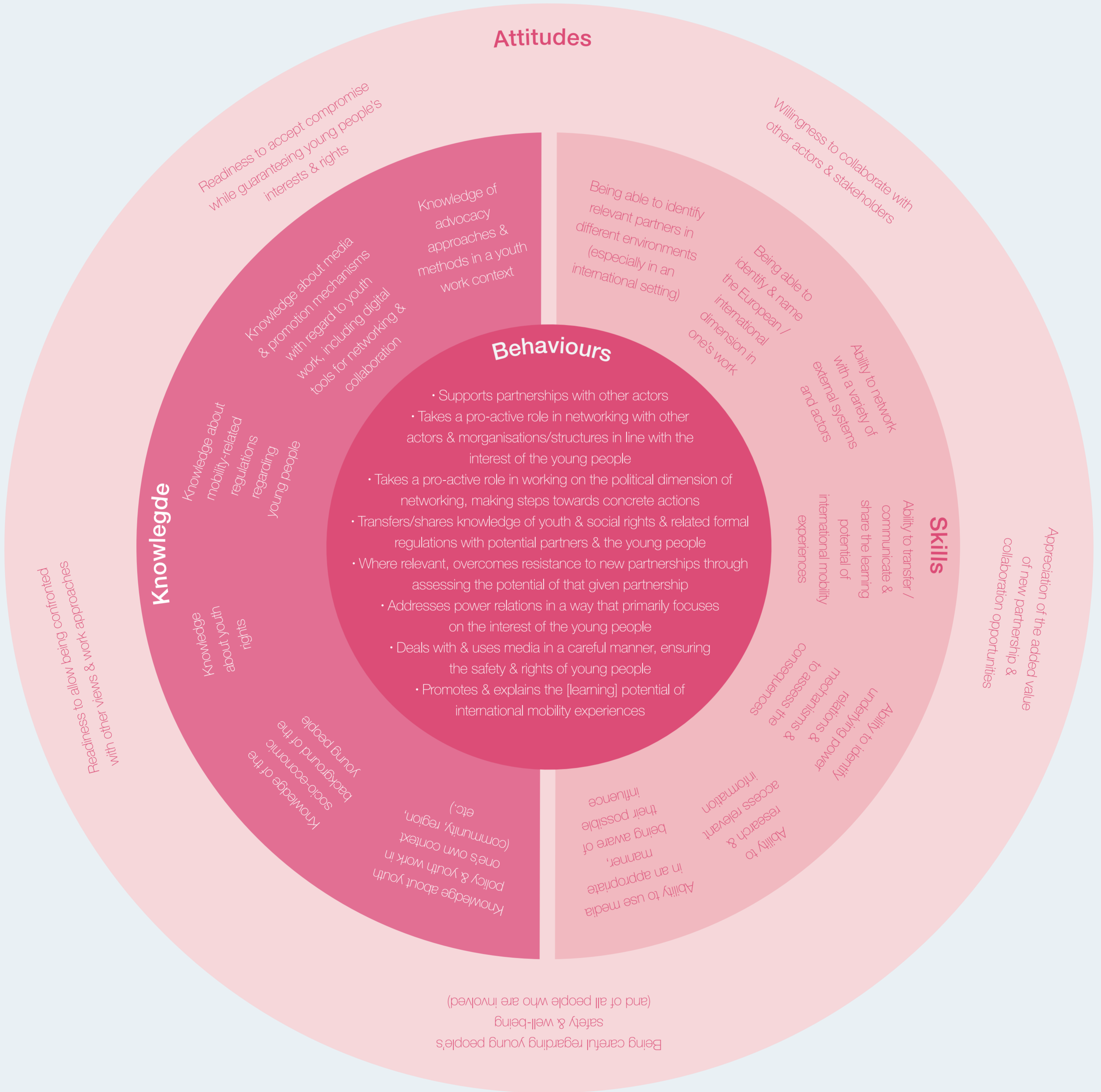


Competence

Networking and advocating



Attitudes

Attitudes (the youth worker's willingness) are the pre-requisite, the foundation for competence development.



Knowledge

Attitudes lead to knowledge (gained through experience, books, the Internet, etc.).



Skills

Attitudes also lead to skills (ability to perform a task, to apply knowledge and turn attitudes into actions).



Behaviours

Knowledge and skills will then lead to appropriate and contextual behaviour.